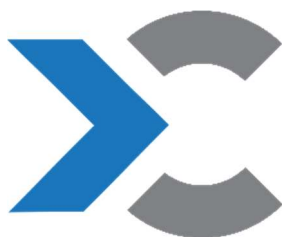


Connekt Wallbox 2M for hollow wall



Installation and User Manual



Description

Connekt Wallbox 2M for hollow wall is a part of the **Connekt Modular System 2M**. Other components are sold separately. This **Wallbox** is compatible with **Connekt Smart Frame 2M** and **Connekt Regular Frame 2M**, both with and without **Connekt Smart Diffuser 2M** which are all sold separately.

This **Wallbox** is intended for use with hollow walls, such as drywalls.

NOTE: For additional instructions, resources and support visit the website at link https://connektworld.com/2M_wallbox

Technical Specification

Product name	Connekt Wallbox 2M for hollow wall
Dimensions	78mm x 78mm x 78mm
Required hole size	75mm x 75mm
Minimal hole depth	60mm
Minimal wall panel thickness	10mm

Contents of the box

- 1 x Connekt Smart Wallbox 2M for hollow wall
- 2 x Screws
- 2 x Wallbox stopper nuts
- 1 x User Manual

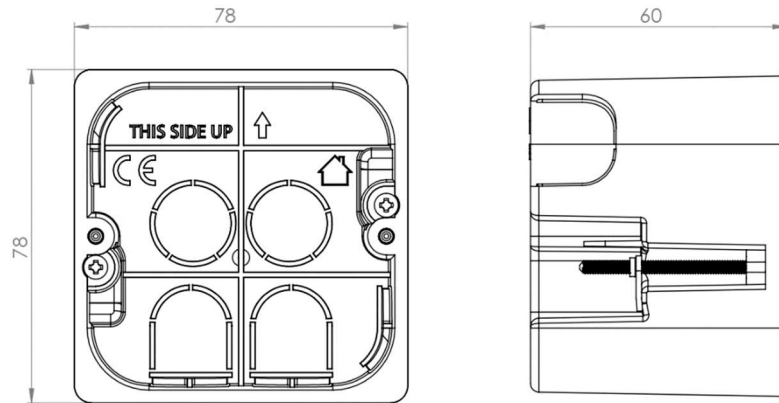
Additional tools required (not included)

- PH2 Philips head screwdriver

Additional components required

- **Connekt Regular Frame 2M** or **Connekt Smart Frame 2M**
- **Connekt Regular Cover 2M** or **Connekt Smart Touch Cover 2M**
- **Connekt Smart Diffuser 2M** (OPTIONAL, only with **Smart** Frame)
- Personalized selection of **Regular** or **Smart** modules

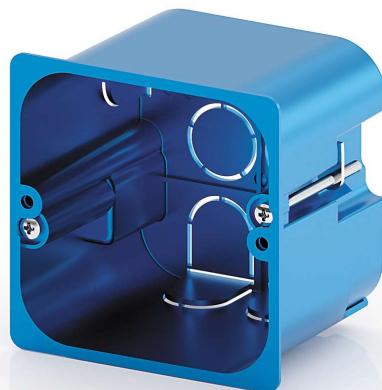
Installation instructions



1. Cut the hole in the wall according to the dimensions above.

IMPORTANT: Make sure the power breaker / fuse is flipped and no hazardous voltages are present at the installation point before proceeding.

2. Break off the desired designated tab for routing the power cable(s).
3. Route the appropriate power cable(s), as well as any other required cables, through the **Wallbox**. Refer to the selected **Frame** and **Modules** instructions for more details about required cables.



4. Insert the **Wallbox** into the wall in the correct orientation. Pay attention to the “**THIS SIDE UP**” and arrow marks on the **Wallbox** itself.

5. Tighten the two screws to fix the **Wallbox** to the wall.



Safety precautions

Every person intending to install and/or use must read and understand the User and Installation Instructions before any work with the device.

Awareness and understanding of the content of these instructions are essential to protect staff from any danger, prevent malfunctions and ensure safe and proper operation.

You must pay attention to all icons, signs, and labels related to the device.

The parts of Connekt Smart Modular System should not be installed, moved, disassembled, modified, or repaired by the end user.

All work described in these instructions may only be carried out by qualified, authorized personnel. Handling the device in the intended and proper way requires compliance with all instructions and information given in these User and Installation Instructions (especially safety-related instructions).

Safety Notes

- The device should be installed in accordance with regional regulations.
- Do not attempt to open, service, or repair the device yourself. Leave all service work to qualified and authorized professionals.
- In case the device becomes visibly damaged, immediately stop using it.
- The device is intended for indoor use only.
- Use the device only for its intended purpose.
- Use the device only with compatible parts as specified in this manual.
- Protect the device from dirt and moisture and use it only in a dry environment.
- Do not expose the device to impacts or excessive force.

Disclaimer and Warranty Waiver

Neither Gelco Electronics Pvt. Ltd. nor Elproms Team j.d.o.o. assume any liability for damages resulting from incorrect installation or assembly, improper use of the product, or failure to comply with the instructions for use and/or safety notes.

Declaration of Conformity

Product: *Connekt Wallbox 2M* for hollow wall

Manufacturer:

Gelco Electronics Pvt. Ltd.
Block No. 142, Khatraj Kadi Road, Karoli
Tal: Kalol, Dist: Gandhinagar – 382721
Gujarat, India
Contact: exports@gelco-world.com

Importer:

Elproms Team j.d.o.o.
Vladka Mačeka 5
10430 Samobor
Croatia

We, Elproms Team j.d.o.o. hereby declare that the product named Connekt 2M Wallbox for hollow wall complies with all relevant provisions of the applicable European Directives and Standards. This Declaration of Conformity is issued in accordance with the requirements of the European Union.

The *Connekt Wallbox 2M* for hollow wall has been designed and manufactured to comply with the applicable European Directives.

CE Certification: *Connekt Wallbox 2M* has obtained the necessary CE certifications from accredited third-party testing laboratories. The following CE markings are affixed to the product:



This Declaration of Conformity is issued under the sole responsibility of Elproms Team j.d.o.o. and remains valid as long as no significant changes are made to the product or its intended use. Any modifications or alterations to the product without our prior approval may void this Declaration of Conformity.

For more information about the declaration of conformity and accompanying documents please contact: info@elproms.com

Signed for and on behalf of:	Elproms Team j.d.o.o.
Place of Issue:	Samobor
Date of Issue:	1 st June 2023
Name:	Nedeljko Štefanić
Position:	Operation Director

Signature:

A handwritten signature in blue ink, appearing to read 'N. Štefanić', with a horizontal line above it.