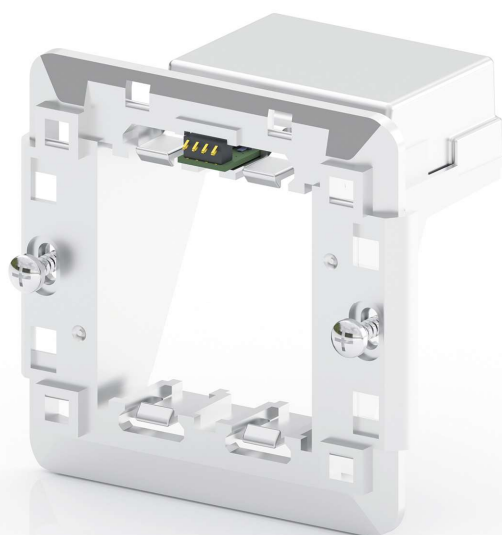


Connekt Smart Frame 2M



Installation and User Manual



Description

Connekt Smart Frame 2M is a part of the **Connekt Smart Modular System 2M**. Other components listed in this manual are sold separately.

This **Frame** requires a compatible **Connekt Wallbox 2M** and the **Connekt Smart Touch Cover 2M**.

This **Connekt Smart Frame 2M** is compatible with the **Connekt Smart Diffuser 2M**, which is an optional component of the system.

This **Connekt Smart Frame 2M** is compatible with both **Smart** and **Regular** modules from the **Connekt Modular System** series of products.

Connekt Smart Frame 2M can house either:

- 1 x module of size **2M**
- 2 x modules of size **1M**.

The **Connekt Smart Frame 2M** is an integral part of the **Connekt Smart Modular System 2M**, allowing other components to communicate with the remote server and the user interface application, depending on the user's selection of accompanying components and modules.

NOTE: This **Smart Frame** is not compatible with the Connekt **Regular** Cover!

NOTE: All components of the selected system should be fully assembled before use. Refer to the individual installation and user manuals for each component for more information.

NOTE: For additional instructions, resources and support visit the website at this link:

https://connektworld.com/2M_SmartFrame

Technical Specification

Product name	Connekt Smart Frame 2M
Dimensions	82 mm x 78 mm x 63 mm
Rated input voltage / frequency	100 – 240 V a.c., 50 / 60 Hz
Rated input current	200 mA
Rated input power	3 W
Operating temperature range	0 – 40 °C
Operating relative humidity range	20 – 60 RH %
Ingress protection rating	IP21
Wireless communication frequency range	2,4 GHz
Wireless protocols	WiFi: IEEE 802.11b/g/n

Additional tools required (not included)

- PH2 Philips head screwdriver
- Flat head screwdriver

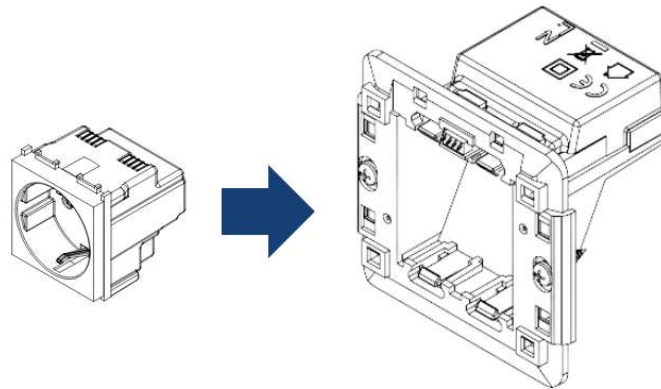
Additional components required (not included)

- **Connekt Wallbox 2M** for your wall type
- **Connekt Smart Touch Cover 2M**
- **Connekt Smart Diffuser 2M** (OPTIONAL)
- Personalized selection of **Smart** or **Regular** modules

Contents of the box

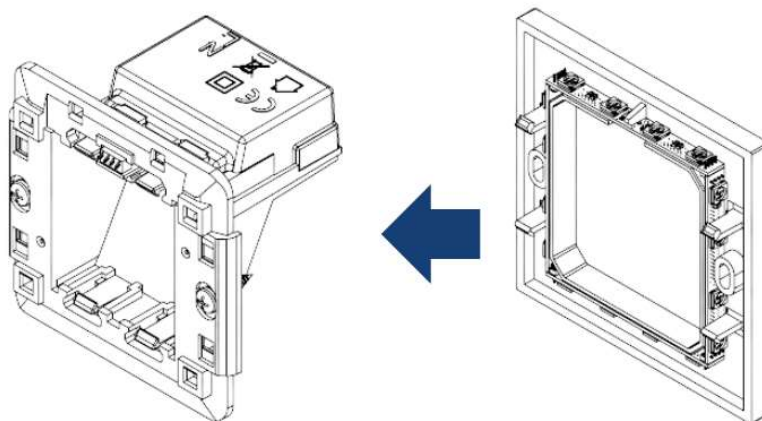
1 x Connekt Smart Frame 2M
2 x Screws 3.5x16mm H2
1 x User Manual

Installation instructions



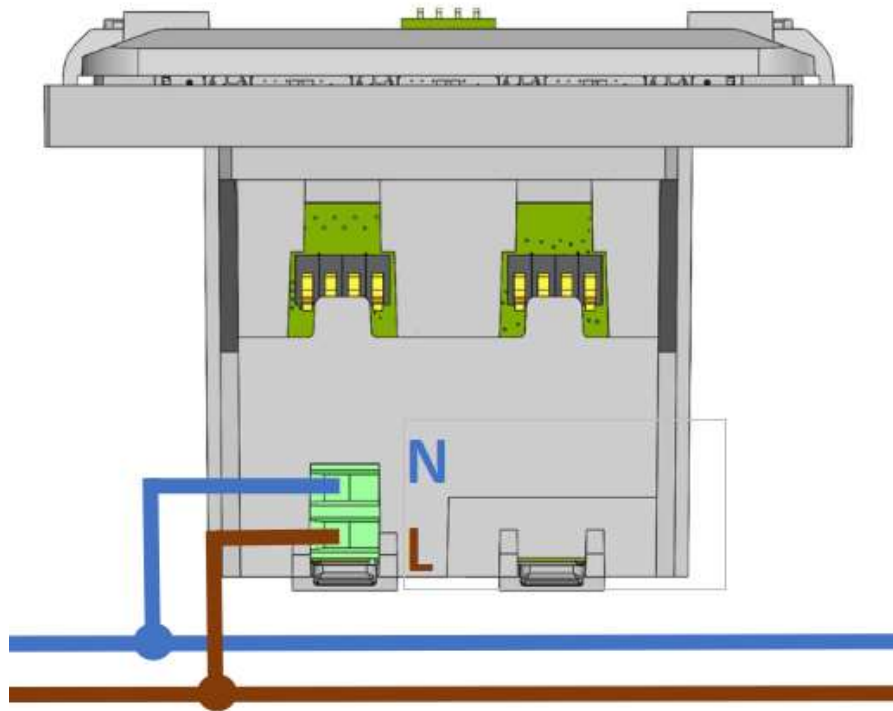
1. Attach selected modules to the **Connekt Smart Frame**. The user can select any compatible modules from **Connekt Smart** and **Connekt Regular** series of products according to personal requirements and preferences.

2. **OPTIONAL:** Attach the **Connekt Smart Diffuser 2M** to the **Connekt Smart Frame 2M** according to the accompanying instructions of the **Diffuser**.



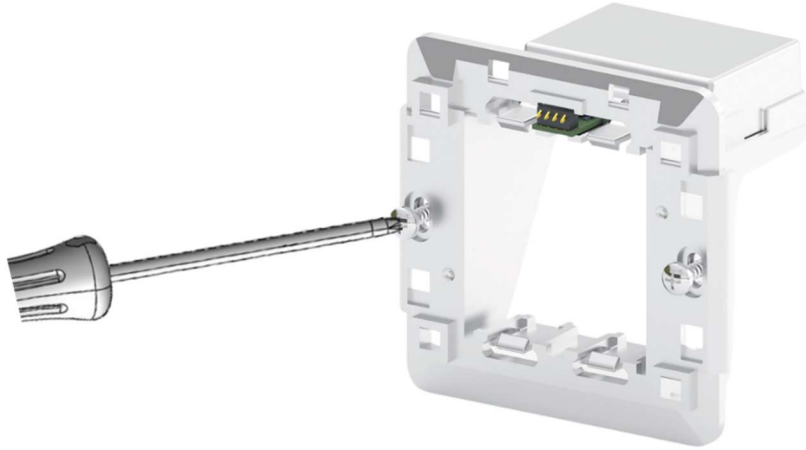
IMPORTANT: Make sure the power breaker / fuse is flipped and no hazardous voltages are present at the installation point before proceeding.

3. Connect AC power wires to the **Connekt Smart Frame 2M** according to the schematic shown above, following the markings for live and neutral. Connect AC power wires to any modules that require it, referring to the individual user manual of each module used.



IMPORTANT: Make sure the wires are adequately inserted and terminal screws are properly tightened.

4. Place the connected assembly into the **Connekt Wallbox 2M** in the correct orientation, where the connector on the front should be facing upwards, as shown in the image above. For **Wallbox** installation refer to the user manual of the **Wallbox**.
5. Attach the **Smart Frame** to the **Wallbox** with 2 screws as shown in the image above.



NOTE: When **Smart Diffuser** is present, use 3.5x22mm screws that come with the **Diffuser**. When no **Diffuser** is present, use 3.5x16mm screws that come with the **Smart Frame**.

6. Attach the **Connekt Smart Touch Cover 2M** to the **Connekt Smart Frame 2M**. Refer to the **Smart Touch Cover** manual for more information.



NOTE: Make sure everything is attached correctly and there are no loose wires or other hazards before proceeding.

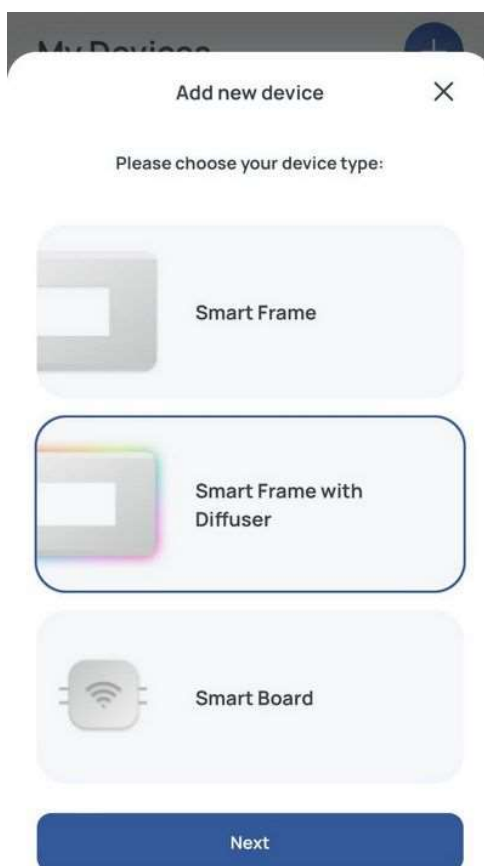
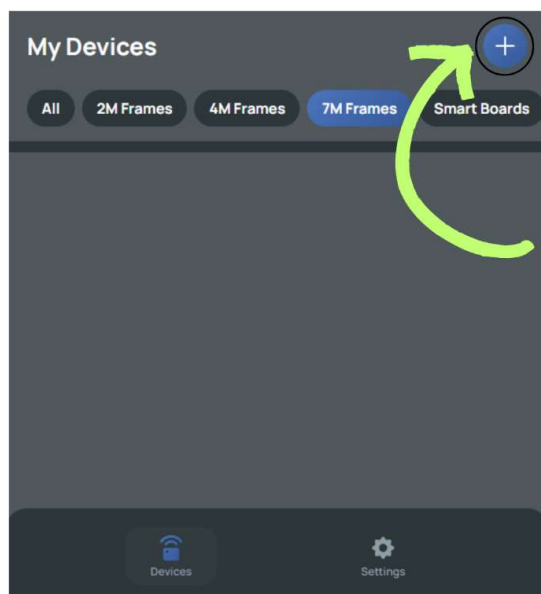
7. Flip the circuit breaker / fuse to turn on the AC power to the system.

After completing the installation, the system will start up in Offline mode. For further steps regarding the configuration continue reading the User Configuration Instructions.

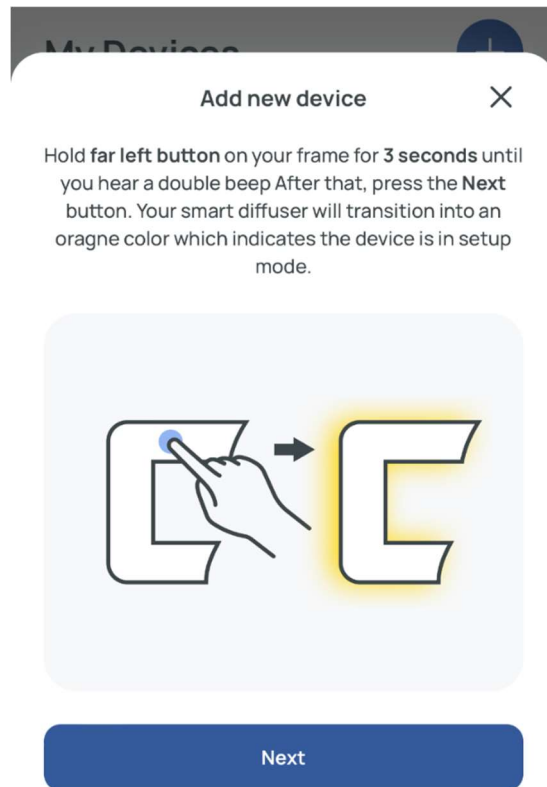
User Configuration Instructions

NOTE: Download the **Connekt Application** from the Google Play Store or Apple App Store before proceeding. Web application is also available at: <https://app.connektworld.com>

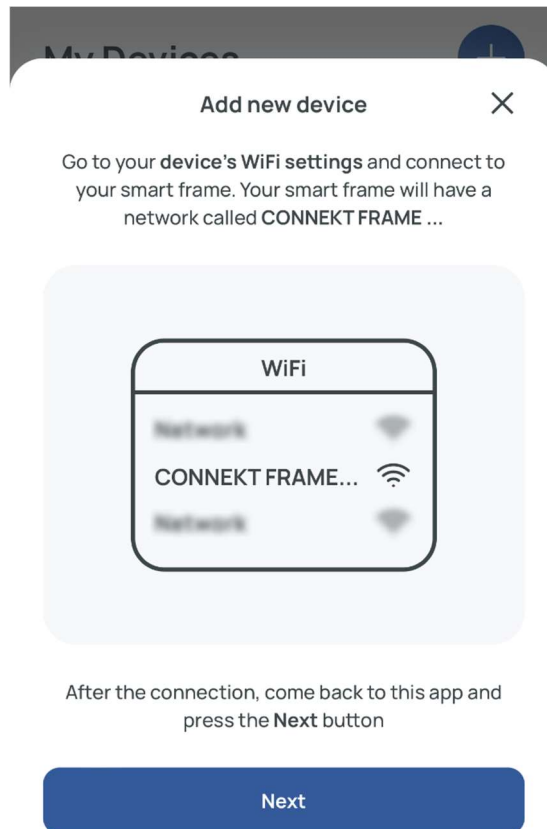
1. Open the **Connekt Application** on your phone. Select “**Add device**” in the top “+” menu and follow the displayed instructions.



2. Put the Frame into Pairing Mode. Press and hold the left **Touch Button** for at least 3 seconds until you hear the beep from the device.



NOTE: If you opted to install **Smart Diffuser** you will see a spinning animation after which the light will stay orange for the duration of the pairing process.



3. Upon successful connection the **Smart Frame** will make a **success** sound and return to normal operation. If there was a problem, the **Smart Frame** will make a **fail** sound and remain in the pairing mode allowing you to check that you entered the correct credentials or try a different network.

NOTE: If you opted to install **Smart Diffuser**, **success** will be accompanied with the **green** blinking animation and **fail** with the **red** blinking animation.

Normal Use

Once you have connected the system to your WiFi network you will be able to control all parameters and functions of the system via the mobile application.

Some of the functions available for the frame include:

- Turning sound effects on and off
- Locking the touch buttons (child / accidental use protection)

Optional features available upon installing the **Diffuser**:

- Turning ambient lighting on and off
- Changing ambient lighting color
- Changing ambient lighting brightness
- Turning light effects on and off

Many other features are available depending on your selection of modules.

In normal use, you can use short presses of the **Touch Buttons** to activate actions on the installed modules. The specific action depends on the module installed. Refer to the user manual for each module for more information.

Factory Reset

To perform a factory reset - press and hold the right **Touch Button** for at least 10 seconds, until you hear a confirmation sound. After a few seconds the frame will reboot in factory default mode. This procedure will also reset all configuration and delete all user data from all the modules attached to the frame.

Information about recycling

Disposal: After the implementation of the European Directives 2012/19/EU and 2006/66/EU in the national legal system, the following applies: Electrical and electronic devices, as well as batteries, must not be disposed of with household waste. Consumers are legally obliged to return electrical and electronic devices, as well as batteries, to public collection points or sales outlets at the end of their useful life. Details on this are defined by the national laws of the respective country. This symbol on the product, user manual, or packaging indicates that the product is subject to these regulations. By recycling, reusing materials, or using old devices/batteries in other ways, you are making an important contribution to protecting our environment.



Safety precautions

Every person intending to install and/or use must read and understand the User and Installation Instructions before any work with the device.

Awareness and understanding of the content of these instructions are essential to protect staff from any danger, prevent malfunctions and ensure safe and proper operation.

You must pay attention to all icons, signs, and labels related to the device.

The parts of Connekt Smart Modular System should not be installed, moved, disassembled, modified, or repaired by the end user.

All work described in these instructions may only be carried out by qualified, authorized personnel. Handling the device in the intended and proper way requires compliance with all instructions and information given in these User and Installation Instructions (especially safety-related instructions).

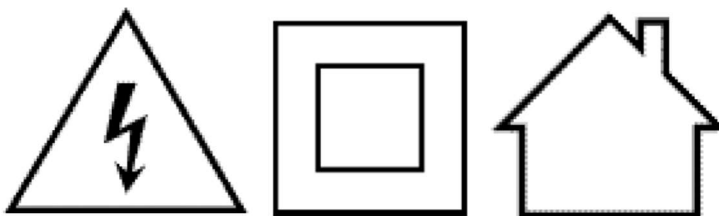
Safety Notes

- The device should be installed in accordance with regional regulations.
- The device should be connected to the installation with an adequate protective element (fuse) with a current limitation of 16 A, in accordance with the technical specifications of the device.
- Do not attempt to open, service, or repair the device yourself. Leave all service work to qualified and authorized professionals.
- Take care not to touch or otherwise damage exposed electronic components and connectors during the installation process to avoid causing malfunctions of the device.
- In case the device becomes visibly damaged, immediately stop using it.
- The device is intended for indoor use only.
- Use the device only for its intended purpose.
- Use the device only with compatible parts as specified in this manual.
- Protect the device from dirt and moisture and use it only in a dry environment.
- Do not expose the device to impacts or excessive force.

Disclaimer and Warranty Waiver

Neither Gelco Electronics Pvt. Ltd. nor Elproms Team j.d.o.o. assume any liability for damages resulting from incorrect installation or assembly, improper use of the product, or failure to comply with the instructions for use and/or safety notes.

Other Device Markings



Declaration of Conformity

Product: *Connekt Smart Frame 2M*

Manufacturer:

Gelco Electronics Pvt. Ltd.
Block No. 142, Khatraj Kadi Road, Karoli
Tal: Kalol, Dist: Gandhinagar – 382721
Gujarat, India
Contact: exports@gelco-world.com

Importer:

Elproms Team j.d.o.o.
Vladka Mačeka 5
10430 Samobor
Croatia

We, Elproms Team j.d.o.o. hereby declare that the product named ***Connekt Smart Frame 2M*** complies with all relevant provisions of the applicable European Directives and Standards. This Declaration of Conformity is issued in accordance with the requirements of the European Union.

The ***Connekt Smart Frame 2M*** has been designed and manufactured to comply with the following European Directives as a part of the ***Connekt Smart Modular System 2M***:

- Low Voltage Directive (2014/35/EU)
- Electromagnetic Compatibility Directive (2014/30/EU)
- Radio Equipment Directive (2014/53/EU)
- Restriction of Hazardous Substances (2015/863/EU)
- Waste from Electrical and Electronic Equipment (2012/19/EU)

CE Certification: The **Connekt Smart Frame 2M** has obtained the necessary CE certifications from accredited third-party testing laboratories. The following CE markings are affixed to the product:



This Declaration of Conformity is issued under the sole responsibility of Elproms Team j.d.o.o. and remains valid as long as no significant changes are made to the product or its intended use. Any modifications or alterations to the product without our prior approval may void this Declaration of Conformity.

For more information about the declaration of conformity and accompanying documents please contact: info@elproms.com

Signed for and on behalf of:	Elproms Team j.d.o.o.
Place of Issue:	Samobor
Date of Issue:	1 st June 2023
Name:	Nedeljko Štefanić
Position:	Operation Director

Signature:

