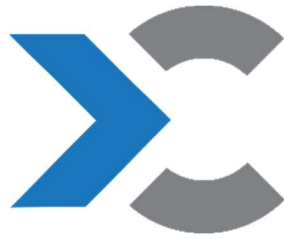


Connekt Smart Physical Switch Two Pole 1M



Installation and User Manual



Description

Connekt Smart Physical Switch Two Pole 1M is a part of the **Connekt Smart Modular System**. Other components listed in this manual are sold separately.

This **Connekt Smart Switch** requires a compatible **Connekt Smart Frame** and other components required by the selected **Smart Frame**, listed in the corresponding user manual. This **Connekt Physical Switch Two Pole 1M** is compatible only with **Connekt Smart Frames**.

This **Connekt Smart Physical Switch Two Pole** is a module of size **1M**. An accompanying **Connekt Smart Frame** is required for normal operation.

NOTE: This **Smart Physical Switch Two Pole 1M** is **not** compatible with Connekt **Regular** Frames!

NOTE: All components of the selected system should be fully assembled before use. Refer to the individual installation and user manuals for each component for more information.

NOTE: For additional instructions, resources and support visit the website at this link:
<https://connektworld.com/1MPhysicalSwitchTwoPole>

Contents of the box

- 1 x Connekt Smart Physical Switch Two Pole 1M
- 1 x User Manual

Technical Specification

Product name	Connekt Smart Physical Switch Two Pole 1M
Color	Traffic White
Dimensions	22.2 mm x 51.7 mm x 43.4 mm
Input rating	0 – 250 V a.c., 50 / 60 Hz, 16 A, 3680 W MAX
Operating temperature range	0 – 40 °C
Operating relative humidity range	20 – 60 RH %
Ingress protection rating	IP21

Additional tools required (not included)

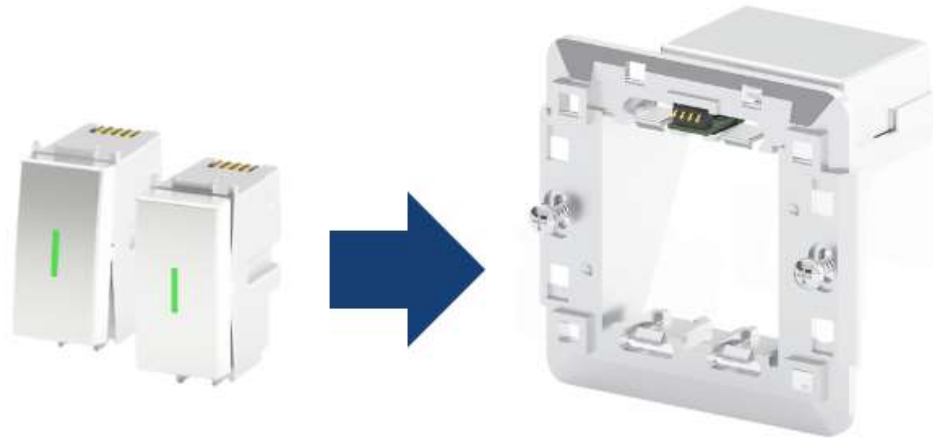
- Flat head or Phillips head screwdriver

Additional components required:

- **Connekt Smart Frame** of desired size (2M / 4M / 7M ...)
- **Connekt Wallbox** for the selected **Frame**, for your wall type
- **Connekt Smart Touch Cover** for the selected **Frame**
- **Connekt Smart Diffuser** for the selected **Frame** (OPTIONAL)
- Other compatible **Smart** or **Regular** Modules (OPTIONAL)

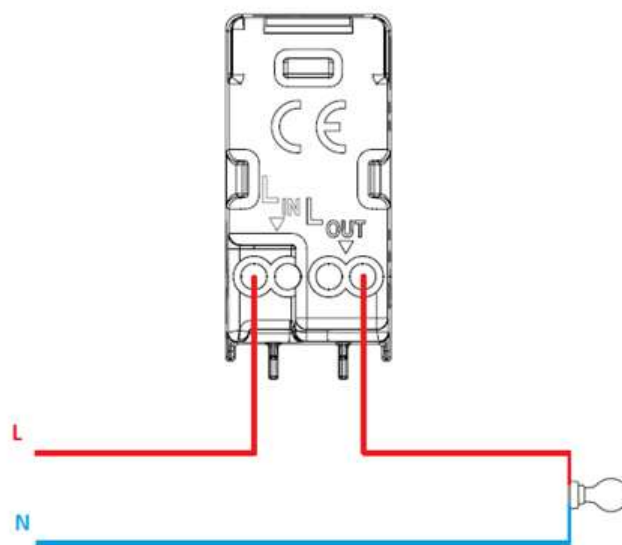
Installation instructions

1. Attach the **Connekt Smart Physical Switch Two Pole 1M** to the selected compatible **Connekt Smart Frame**. Depending on your selected **Frame** and other components, install all components as well in a way that is stated in their corresponding manuals.



IMPORTANT: Make sure the power breaker / fuse is flipped and no hazardous voltages are present at the installation point before proceeding.

2. Connect AC power wires to the **Connekt Smart Physical Switch Two Pole 1M** according to the schematic shown below, following the markings for live, neutral and earth. Connect AC power wires to any other modules that require it, as well as the selected **Connekt Smart Frame**, referring to the corresponding individual user manuals.



3. Complete the steps listed in the user manual of the selected **Connekt Smart Frame** before proceeding.

NOTE: Make sure everything is attached correctly and there are no loose wires or other hazards before proceeding.

4. Flip the circuit breaker / fuse to turn on the AC power to the system.

After completing the installation, the system will start up in Offline mode. For further steps regarding the configuration read the **User Configuration** section of the selected **Connekt Smart Frame**.

Normal Use

Once you have connected the system to your WiFi network as per the **User Configuration Manual** section of the selected **Connekt Smart Frame** Instruction Manual, you will be able to control all parameters and functions of the system via the mobile application.

In normal use, you can use short presses of the touch buttons on the **Connekt Smart Touch Cover**, above the installed position of the switch in the system. The touch button activate the **Timer**.

Factory Reset

To perform a factory reset - press and hold the rightmost touch button of the **Connekt Smart Touch Cover** for at least 10 seconds, until you hear a confirmation sound. This will reset all parameters of the switch together with the **Smart Frame** and all other installed modules, if any are installed. After factory reset the **Connekt Smart Physical Switch Two Pole 1M** will be set to **on** state.

Safety precautions

Every person intending to install and/or use must read and understand the User and Installation Instructions before any work with the device.

Awareness and understanding of the content of these instructions are essential to protect staff from any danger, prevent malfunctions and ensure safe and proper operation.

You must pay attention to all icons, signs, and labels related to the device.

The parts of Connekt Smart Modular System should not be installed, moved, disassembled, modified, or repaired by the end user.

All work described in these instructions may only be carried out by qualified, authorized personnel. Handling the device in the intended and proper way requires compliance with all instructions and information given in these User and Installation Instructions (especially safety-related instructions).

Safety Notes

- The device should be installed in accordance with regional regulations.
- The device should be connected to the installation with an adequate protective element (fuse) with a current limitation of 16 A, in accordance with the technical specifications of the device.
- Do not attempt to open, service, or repair the device yourself. Leave all service work to qualified and authorized professionals.
- Take care not to touch or otherwise damage exposed electronic components and connectors during the installation process to avoid causing malfunctions of the device.
- In case the device becomes visibly damaged, immediately stop using it.
- The device is intended for indoor use only.
- Use the device only for its intended purpose.
- Use the device only with compatible parts as specified in this manual.
- Protect the device from dirt and moisture and use it only in a dry environment.
- Do not expose the device to impacts or excessive force.

Disclaimer and Warranty Waiver

Neither Gelco Electronics Pvt. Ltd. nor Elproms Team j.d.o.o. assume any liability for damages resulting from incorrect installation or assembly, improper use of the product, or failure to comply with the instructions for use and/or safety notes.

Information about recycling

Disposal: After the implementation of the European Directives 2012/19/EU and 2006/66/EU in the national legal system, the following applies: Electrical and electronic devices, as well as batteries, must not be disposed of with household waste. Consumers are legally obliged to return electrical and electronic devices, as well as batteries, to public collection points or sales outlets at the end of their useful life. Details on this are defined by the national laws of the respective country. This symbol on the product, user manual, or packaging indicates that the product is subject to these regulations. By recycling, reusing materials, or using old devices/batteries in other ways, you are making an important contribution to protecting our environment.



Other Device Markings



Declaration of Conformity

Product: *Connekt Smart Physical Switch Two Pole 1M*

Manufacturer:

Gelco Electronics Pvt. Ltd.
Block No. 142, Khatraj Kadi Road, Karoli
Tal: Kalol, Dist: Gandhinagar – 382721
Gujarat, India
Contact: exports@gelco-world.com

Importer:

Elproms Team j.d.o.o.
Vladka Mačeka 5
10430 Samobor
Croatia

We, Elproms Team j.d.o.o. hereby declare that the product named ***Connekt Smart Physical Switch Two Pole 1M*** complies with all relevant provisions of the applicable European Directives and Standards. This Declaration of Conformity is issued in accordance with the requirements of the European Union.

The ***Connekt Smart Physical Switch Two Pole 1M*** has been designed and manufactured to comply with the following European Directives as a part of the ***Connekt Smart Modular System***:

- Low Voltage Directive (2014/35/EU)
- Electromagnetic Compatibility Directive (2014/30/EU)
- Radio Equipment Directive (2014/53/EU)
- Restriction of Hazardous Substances (2015/863/EU)
- Waste from Electrical and Electronic Equipment (2012/19/EU)

CE Certification: The **Connekt Smart Physical Switch Two Pole 1M** has obtained the necessary CE certifications from accredited third-party testing laboratories. The following CE markings are affixed to the product:

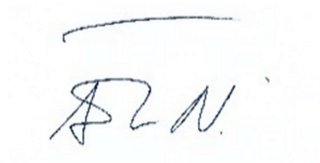


This Declaration of Conformity is issued under the sole responsibility of Elproms Team j.d.o.o. and remains valid as long as no significant changes are made to the product or its intended use. Any modifications or alterations to the product without our prior approval may void this Declaration of Conformity.

For more information about the declaration of conformity and accompanying documents please contact: info@elproms.com

Signed for and on behalf of:	Elproms Team j.d.o.o.
Place of Issue:	Samobor
Date of Issue:	1 st June 2023
Name:	Nedeljko Štefanić
Position:	Operation Director

Signature:

A handwritten signature in blue ink, appearing to read 'Nedeljko Štefanić', with a horizontal line above it.